

Engineering Strength For

HUMAN MOVEMENT



 liveshealthcare.com



LIVES
HEALTH CARE

"Take a New Step with Lives"

COMPANY PROFILE

Lives Health Care was born from a simple but powerful realization – quality prosthetic and orthopedic products should be reliable, affordable, and accessible.

We saw that many products in the market were either expensive or lacked the quality that a human life truly deserves. Since these devices are not just products but a part of someone's body and confidence, this concern deeply moved us.

With this purpose, we began our journey in Pune, starting small with a commitment to manufacture prosthetic and orthopedic components that combine quality, precision, and affordability. Step by step, with dedication and learning from clinicians and users, Lives Health Care grew into a trusted manufacturer and exporter serving patients and healthcare providers.

Today, we design and produce a wide range of prosthetic and orthotic solutions – helping individuals regain mobility, dignity, and independence. Every product we create carries one promise: to support life's every step with care and respect.

OUR MISSION

To manufacture high-quality, affordable prosthetic and orthopedic products that restore mobility, independence, and confidence for every individual.

OUR VISION

To become a globally trusted brand in prosthetics and orthotics by delivering innovative, reliable, and human-centered mobility solutions.





Zertifikat Certificate Zertifikat



Certificate Of Registration

The Certification body of DIMS Certification Pvt. Ltd.

Certifies That

LIVES HEALTH CARE

OFFICE ADDRESS-OPPPODSIGHAL, DATTA MANDIR, CHINCHAWAD, PUNE - 411019, MAHARASHTRA, INDIA.
WORK ADDRESS - GAT NO. 107/107B, NEAR PANJURANG KRUPA HOTEL, JYOTIBA NAGAR, TALAJUDE, PUNE - 411042, INDIA.

Has been assessed and found to be in Compliance with the requirements applicable as per Medical Devices - Quality Management System Conforming

ISO 13485:2016

for the following Scope :

ALL MODULAR PROSTHETIC COMPONENTS / PARTS, ADAPTORS / ATTACHMENT / Pylon FOOT PIECES ETC. / ROTATION TURN BUCKLE ADAPTORS
HIP / ANKLE / ANKLE JOINT, BUTTLE LOCK, BUTTLE LOCK SHIFTING ADAPTORS

Certificate Number : MS0114120201191

Certificate Issue Date : 05/01/2021 Issue / Renewal Date : 05/01/2024
Expiry Date : 04/30/2027 Certification Period : 3 Years (3rd Year)

This Certificate is valid for 3 years and same is subjected to satisfactory maintenance of management system as per the standard. This certificate shall only be certified on website www.dims-cert.com for current validity. This certificate remains property of DIMS Certification Pvt. Ltd. and same need to be returned when asked.


Certification's Director



DIMS CERTIFICATION PVT. LTD.
Head Office : 8, New Ram Nagar Apartment, 3rd Road, Sec-16, Gurgaon - 122001, Maharashtra, India
Web : www.dims-cert.com
DIMS Certification Pvt. Ltd. is Accredited by Management Board of Accreditation Services (MBAS)

Zertifikat Certificate Zertifikat



Certificate Of Compliance

The Certification body of DIMS Certification Pvt. Ltd.

Certifies That

LIVES HEALTH CARE

OFFICE ADDRESS-OPPPODSIGHAL, DATTA MANDIR, CHINCHAWAD, PUNE - 411019, MAHARASHTRA, INDIA.
WORK ADDRESS - GAT NO. 107/107B, NEAR PANJURANG KRUPA HOTEL, JYOTIBA NAGAR, TALAJUDE, PUNE - 411042, INDIA.

Has been assessed and found to be in Compliance with the requirements applicable as per Green Foot prosthetic, shock absorbers with the strength requirements

ISO 10328:2016

the test described in ISO 19328:2016 Complies:

1. PRINCIPAL STATIC AND CYCLIC TEST FOR ALL COMPONENTS,
2. A REPEATABLE STATIC TEST IN TORSION FOR ALL COMPONENTS,
3. SEPARATE STATIC AND CYCLIC TEST ON ANKLE FOOT DEVICE AND FOOT BRIMS FOR ALL ANKLE FOOT DEVICE.

Certificate Number : CE0114120201192

Certificate Issue Date : 05/01/2021 Issue / Renewal Date : 05/01/2024
Expiry Date : 04/30/2027 Certification Period : 3 Years (3rd Year)

This Certificate is valid for 3 years and same is subjected to satisfactory maintenance of management system as per the standard. This certificate shall only be certified on website www.dims-cert.com for current validity. This certificate remains property of DIMS Certification Pvt. Ltd. and same need to be returned when asked.


Certification's Director



DIMS CERTIFICATION PVT. LTD.
Head Office : 8, New Ram Nagar Apartment, 3rd Road, Sec-16, Gurgaon - 122001, Maharashtra, India
Web : www.dims-cert.com
DIMS Certification Pvt. Ltd. is Accredited by Management Board of Accreditation Services (MBAS)

Zertifikat Certificate Zertifikat



Certificate Of Compliance

DIMS India Certified that the EMC of

LIVES HEALTH CARE

OFFICE ADDRESS-OPPPODSIGHAL, DATTA MANDIR, CHINCHAWAD, PUNE - 411019, MAHARASHTRA, INDIA.
WORK ADDRESS - GAT NO. 107/107B, NEAR PANJURANG KRUPA HOTEL, JYOTIBA NAGAR, TALAJUDE, PUNE - 411042, INDIA.

Has been assessed and found to be in Compliance with the requirements applicable as per EMC Conforming

ISO 13485:2016, ISO 22523:2006, ISO 10328:2016

for the following Scope :

ALL MODULAR PROSTHETIC COMPONENTS / PARTS, ADAPTORS / ATTACHMENT / Pylon FOOT PIECES ETC. / ROTATION TURN BUCKLE ADAPTORS
HIP / ANKLE / ANKLE JOINT, BUTTLE LOCK, BUTTLE LOCK SHIFTING ADAPTORS

The Continual validity of the certificate is conditional to EMC compliance with the terms and conditions of DIMS Certification Scheme regulations.

Certificate Number : CE0114120201193

Certificate Issue Date : 05/01/2021 Issue / Renewal Date : 05/01/2024
Expiry Date : 04/30/2027 Certification Period : 3 Years (3rd Year)

This Certificate is valid for 3 years and same is subjected to satisfactory maintenance of EMC Regulation system as per the standard. This certificate shall only be certified on website www.dims-cert.com for current validity. This certificate remains property of DIMS Certification Pvt. Ltd. and same need to be returned when asked.
This CE Mark is given under strict control and the responsibility of the manufacturing completion of an EC Declaration of Conformity and Compliance with all relevant EC Directives.


Certification's Director



DIMS CERTIFICATION PVT. LTD.
Head Office : 8, New Ram Nagar Apartment, 3rd Road, Sec-16, Gurgaon - 122001, Maharashtra, India
Web : www.dims-cert.com
DIMS Certification Pvt. Ltd. is Accredited by Management Board of Accreditation Services (MBAS)

INDEX

Prosthetic Adapters ----- 01 - 06

Shuttel Lock's ----- 07 - 08

Knee Rotator & Suction Valve ----- 09

Knee Joint----- 10 - 13

Prosthetic Foot's ----- 14

Cosmetic Category ----- 15 - 16

Prosthetic Kit' s ----- 17 - 18

Child Components ----- 19

Orthotic's Product ----- 20 - 21

Raw Materials ----- 22 - 24

Tool's ----- 25 - 27

Machine's For P&O Workshop ----- 28 - 37

ADAPTERS

Sach Foot Adapter

Used to connect the prosthetic foot securely with the pylon or lower limb assembly, ensuring stability and proper alignment.

Technical Highlights:

- Product Code : LHC-01 PC
- Material : SS / Ti / CS
- Load weight : 80kg-100kg



Adapter to Clamp the Tube

Designed to firmly clamp the prosthetic tube, allowing precise height and alignment adjustment.

Technical Highlights:

- Product Code : LHC-02PC
- Material : SS / Ti / CS
- Load Capacity: 80-100 kg



Adapter to Clamp the Tube (With 10 Degree Tilt)

Allows angular alignment of the tube for improved gait correction and comfort.

Technical Highlights:

- Product Code : LHC-06PC
- Material: SS / Ti
- Load Capacity: 80-100 kg



Pyramidal Tube Clamp Adapter

Designed for precise pyramidal alignment and quick adjustments during prosthetic fitting.

Technical Highlights:

- Product Code : LHC-07PC
- Material: SS / Ti
- Load Capacity: 80-100 kg



ADAPTERS

BK Tube (200mm) with Integrated Adapter

A below-knee prosthetic tube with a built-in adapter for quick assembly and reduced component usage.

Technical Highlights:

- Product Code : LHC-04BK-200
- Pylon Material: Aluminium / Carbon
- Load Capacity: 80-100 kg



AK Tube (400) with Integrated Adapter

Above-knee tube system with integrated adapter, offering strength and ease of fitting.

Technical Highlights:

- Product Code : LHC-05AK-400
- Pylon Material: Aluminium / Carbon
- Load Capacity: 80-100 kg



Four Pronge Socket Adapter

Provides strong socket attachment with four-prong fixation for improved load distribution and durability.

Technical Highlights:

- Product Code : LHC-03PC
- Material: SS / Ti / CS
- Load Capacity: 80-100 kg



Adapter For Socket Flat Type Pyramidal

A compact and durable flat-type socket adapter designed to provide secure connection and accurate alignment in prosthetic assemblies.

Technical Highlights:

- Product code: LHC-10PC-2
- Material: SS / Ti / CS
- Load Weight: 80-100 kg



ADAPTERS

AK / BK Pyramidal Socket Adapter For Draping

A precision-engineered adapter designed to connect prosthetic sockets with pyramidal components.

Technical Highlights:

- Product code: LHC-28PC
- Material: SS / Ti / CS
- Load Capacity: 80-100 kg



Bk Pyramidal Adapter For Draping

A BK pyramidal adapter for draping is a prosthetic accessory used mainly during below-knee (BK) amputee prosthetic fabrication and alignment.

Technical Highlights:

- Product Code: LHC-27PC
- Material: SS / Ti / CS
- Load Capacity: 80-100 kg



Adapter For Socket Flat Type With Inner (Threaded)

Includes inner locking mechanism for enhanced strength and long-term stability.

Technical Highlights:

- Product code: LHC-09PC-1
- Material: SS / Ti / CS
- Load Weight: 80-100kg



Adapter For Socket Flat Type With Inner (Pyramidal)

Combines flat socket mounting with internal pyramidal support for maximum reliability.

Technical Highlights:

- Product code: LHC-11 PC
- Material: SS / Ti / CS
- Load Weight: 80-100kg



ADAPTERS

Adapter For AK (Four Pronge) With Pyramid Inner

Heavy-duty four-Pronge adapter for above-knee prosthetic applications.

Technical Highlights:

- Product code : LHC-25PC-PI
- Material: CS / SS/ Ti
- Load Capacity: 80kg-100 kg



Adapter For AK (Three Pronge) With Receiver Inner

Offers enhanced alignment flexibility with integrated receiver or pyramidal inner.

Technical Highlights:

- Product code : LHC-16PC-RI
- Material: CS / SS/ Ti
- Load Capacity: 80kg-100 kg



Adapter For AK (Three Pronge) With Pyramid Inner

Offers enhanced alignment flexibility with integrated receiver or pyramidal inner.

Technical Highlights:

- Product code : LHC-17PC-PI
- Material: CS / SS/ Ti
- Load Weight : 80kg-100 kg



Adapter For AK (Four Pronge) With Receiver Inner

Heavy-duty four-pronge adapter for above-knee prosthetic applications.

Technical Highlights:

- Product code : LHC-24PC-PI
- Material: CS / SS/ Ti
- Load Weight : 80kg-100 kg



ADAPTERS

Adapter For Socket Flat Type Pyramidal Receiver

Used to receive pyramidal components securely while allowing fine alignment adjustments.

Technical Highlights:

- Product Code : LHC-13PC
- Material: SS / Ti / CS
- Load Capacity: 80kg-100 kg



Plastic Socket Adapter

A lightweight and durable plastic socket adapter designed for secure connection between the prosthetic socket and pylon system.

Technical Highlights:

- Product code : LHC-26PC
- Material: Composite Plastic
- Load Capacity: 80kg-100 kg



Base Plate For Flat Type Adapter

Acts as a support plate to strengthen flat adapter connections.

Technical Highlights:

- Product Code : LHC-14PC
- Material: SS / Ti / CS
- Load Weight : 80kg-100 kg



Double Mouth Adapter (Both Side Pyramid Receiver)

Used to connect two prosthetic components with pyramidal interfaces on both sides.

Technical Highlights:

- Product code : LHC-21PC
32/45/60/75
- Material: CS / SS / Ti
- Load Weight : 80kg-100 kg



ADAPTERS

Adapter To Replace The Tube

Allows easy replacement or extension of prosthetic tubes without changing the full assembly.

Technical Highlights:

- Product Code : LHC-20PC
45 / 60 / 75 / 90
- Material: SS / Ti / CS
- Load Capacity: 80kg-100 kg



Double Mouth Adapter Pyramid & Pyramid Receiver

Used to connect two prosthetic components with pyramidal interfaces on both sides.

Technical Highlights:

- Product Code : LHC-22PC
32 / 45 / 60 / 75
- Material: SS / Ti / CS
- Load Capacity : 80kg-100 kg



Shifting Adapter

Acts as a support plate to strengthen flat adapter connections.

Technical Highlights:

- Product Code : LHC-30PC
- Material: Al / SS / Ti / CS
- Load Weight : 80kg-100 kg



Clutch Shuttle Lock

A reliable mechanical locking system designed for secure suspension in prosthetic limbs. The clutch shuttle lock ensures firm attachment, easy engagement.

Technical Highlights:

- Product code : LHC-01 SL
- Material : Composite Plastic
- Load weight : 80kg-100kg



Titanium Shuttle Lock System (AK)

The Shuttle Lock System for Above Knee (AK) prosthetics provides a secure and dependable suspension solution.

Technical Highlights:

- Product code : LHC-06 SL
- Material : Ti
- Load weight : 80kg-100kg



Titanium Shuttle Lock System (BK)

The Shuttle Lock System for Below Knee (BK) prosthetics offers a secure and comfortable suspension solution.

Technical Highlights:

- Product code : LHC-06SL
- Material : Ti
- Load weight : 80kg-100kg



Fit Kit Lock

The Shuttle Lock is a secure suspension system used in prosthetic limbs to ensure firm socket attachment and user confidence.

Technical Highlights:

- Product code : LHC-02SL
- Material : Composite Plastic
- Load weight : 80kg-100kg



Index Shuttle Lock

A secure suspension system designed for prosthetic limbs, providing firm socket attachment, smooth locking action, and easy release.

Technical Highlights:

- Product code : LHC-01 SL
- Material : Al & SS
- Load weight : 80kg-100kg



AK Shuttle Lock System

The AK Shuttle Lock is specifically designed for Above Knee prosthetic systems, providing strong suspension and secure socket attachment.

Technical Highlights:

- Product code : LHC-06 SL
- Material : Al & SS
- Load weight : 80kg-100kg



BK Shuttle Lock System

The BK Shuttle Lock is specifically designed for Above Knee prosthetic systems, providing strong suspension and secure socket attachment.

Technical Highlights:

- Product code : LHC-04SL
- Material : Al & SS
- Load weight : 80kg-100kg



KNEE ROTATOR & SUCTION VALVE

Titanium Knee Rotator (Turn Table)

A high-strength, lightweight knee rotator designed for smooth rotational movement in above-knee prosthetic systems. The titanium construction ensures durability, corrosion resistance, and long-term performance while enhancing user comfort and ease of movement.

Technical Highlights:

- Product code : LHC-01KR
- Material : Titanium
- Load weight : 80kg-100kg



SS Knee Rotator (Turn Table)

A robust and reliable knee rotator designed to provide smooth rotational movement in above-knee prosthetic systems. Made from high-quality stainless steel, it offers excellent strength, durability, and long-term stability for daily use.

Technical Highlights:

- Product code : LHC-02KR
- Material : SS
- Load weight : 80kg-100kg

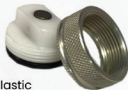


Suction Valve set for Draping

A reliable suction valve set designed for draping applications, ensuring consistent vacuum control during lamination and fabrication processes.

Technical Highlights:

- Product code : LHC-01SV
- Material : Aluminium + Composite Plastic
- Load weight : 80kg-100kg



Suction Valve Set for Lamination

A precision suction valve set designed for lamination processes, providing controlled vacuum and reliable sealing during prosthetic fabrication.

Technical Highlights:

- Product code : LHC-02SV
- Material : Aluminium + Composite Plastic
- Load weight : 80kg-100kg



Four Bar Pneumatic Knee Joint

Advanced prosthetic knee joint designed with a four-bar linkage system and pneumatic control for smoother.

Technical Highlights:

- Product code : LHC-09KJ
- Material : Al
- Load weight : 80kg-100kg



Geometric Five Bar Pneumatic Knee joint

A high-performance prosthetic knee joint engineered with a geometric five-bar linkage system and pneumatic control to provide superior stability.

Technical Highlights:

- Product code : LHC-06 SL
- Material : Al
- Load weight : 80kg-125kg



Active Motion Pneumatic Knee Joint

An advanced prosthetic knee joint designed to support active users with smooth, responsive motion and controlled gait.

Technical Highlights:

- Product code : LHC-06SL
- Material : Al
- Load weight : 80kg-100kg



Single Axis Pneumatic Knee Joint

A reliable prosthetic knee joint featuring a single-axis mechanical design combined with pneumatic swing control.

Technical Highlights:

- Product code : LHC-02SL
- Material : Al
- Load weight : 80kg-100kg



Four Bar Mechanical Knee Joint (Aluminium)

A dependable prosthetic knee joint engineered with a four-bar linkage system to provide enhanced stance stability and controlled knee motion.

Technical Highlights:

- Product code : LHC-08KJ
- Material : Al
- Load weight : 80kg-100kg



Polycentric (Four Bar) Knee Joint (Both Side Pyramid)

A robust polycentric knee joint designed with a four-bar linkage system and pyramidal adapters on both the upper and lower sides.

Technical Highlights:

- Product code : LHC-01KJ
- Material : SS
- Load weight : 80kg-100kg



Polycentric Four Axis Hip Joint (Aluminium)

A lightweight and stable prosthetic knee joint designed with a polycentric four-axis mechanism to deliver enhanced stance control and natural knee motion.

Technical Highlights:

- Product code : LHC-07KJ
- Material : Al
- Load weight : 80kg-100kg



Polycentric (Four Bar) Knee Joint

A high-stability prosthetic knee joint engineered with a polycentric four-bar linkage system to provide enhanced stance control and a more natural gait pattern.

Technical Highlights:

- Product code : LHC-02KJ
- Material : SS
- Load weight : 80kg-100kg



Single Axis Weight - Activated Knee Joint

A reliable mechanical knee joint designed to provide enhanced safety and stability during.

Technical Highlights:

- Product code : LHC-03KJ
- Material : SS
- Load weight : 80kg-100kg



Single Axis Knee Joint with Manual Lock

A durable and reliable knee joint designed to provide enhanced stability and controlled movement for prosthetic users.

Technical Highlights:

- Product code : LHC-KJ-SAM-01
- Material : SS
- Load weight : 100-120 kg



Single Axis Knee Joint with Adjustable Constant Friction

A precision-engineered knee joint designed to provide controlled swing phase through adjustable constant friction.

Technical Highlights:

- Product code : LHC-KJ-SACF-02
- Material : SS
- Load weight : 100-120 kg



Polycentric Knee Joint for Knee Disarticulation

A specially engineered polycentric knee joint designed for knee disarticulation amputations.

Technical Highlights:

- Product code : LHC-KJ-PKD-03
- Material : SS
- Load weight : 80kg - 120 kg

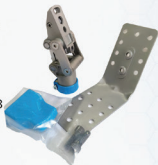


Polycentric Four-Axis Hip Joint

A four-axis polycentric hip joint
for smooth movement,
better balance & natural gait.

Technical Highlights:

- Product code : LHC-HJ-P4A-13
- Material : SS
- Load weight : 120 kg



Wings Low Ankle Carbon Foot

Wings Low Ankle Carbon Foot is a lightweight prosthetic foot with a carbon fiber design that provides excellent energy return, flexibility.

Technical Highlights:

- Product code : LHC-03PF
- Weight Range : 290g-660g
- Size : 22 -27
- Load weight : 90kg-110kg



Sach Foot With Plastic keel

Prosthetic SACH Foot with Plastic Keel
SACH Prosthetic Foot – Plastic Keel Design.

Technical Highlights:

- Product code : LHC-01PF
- Weight Range : 170g-700g
- Size : 14-28
- Load weight : 90kg-110kg



Dynamic Carbon Foot

Dynamic Carbon Foot is a lightweight, high-performance prosthetic foot designed with a carbon fiber keel to provide excellent energy return.

Technical Highlights:

- Product code : LHC - 02 PF
- Weight Range : 320g-700g
- Size : 22-27
- Load weight : 125+kg



Polycentric Double Hole Single Axis Foot

Polycentric Double Axis Foot with Ankle is a prosthetic foot designed to provide controlled multi-axis movement.

Technical Highlights:

- Product code : LHC-05PF
- Weight Range : 480g-660g
- Size : 21-27
- Load weight : 90kg-110kg



COSMETIC CATEGORY

AK/BK Foam Cover Pre Shape

Pre-shaped Above-Knee foam cover for natural limb contour, easy customization, and smooth cosmetic finish.

Technical Highlights:

- Product code : LHC-01COS-AK/BK
- Material : Cosmetic Foam



AK PU Foam

Polyurethane foam for Above-Knee prosthetics, flexible, durable, and easy to shape.

Technical Highlights:

- Product code : LHC-02COS
- Material : High-density Polyurethane (PU) Foam



BK Foam Cover (160x160x400)mm

A foam cover designed for below-knee prosthesis, providing a natural contour and smooth cosmetic finish. Easy to shape and lightweight, it enhances appearance while ensuring user comfort.

Technical Highlights:

- Product code : LHC-03COS
- Material : Foam



AK TES Belt

Support belt designed for above-knee prosthesis, providing secure suspension and added stability for confident and comfortable walking.

Technical Highlights:

- Product code : LHC-05COS
- Material : Cloth
- Color : Black & Skin



COSMETIC CATEGORY

Cosmectic Stocking Bk

Elastic cosmetic stocking designed for below-knee prostheses to provide a natural skin-like appearance and clean finishing. Durable, stretchable, and easy to apply, it enhances aesthetics while protecting the prosthetic limb.

Technical Highlights:

- Product code : LHC-06COS
- Material : Elastic Cloth



Cosmetic Stocking AK

Elastic cosmetic stocking designed for above-knee prostheses to provide a natural skin-like appearance and clean finishing. Durable, stretchable, and easy to apply, it enhances aesthetics while protecting the prosthetic limb.

Technical Highlights:

- Product code : LHC-04COS
- Material : Elastic Cloth



BK TES Belt

Support belt designed for below-knee prostheses, offering secure suspension and improved stability for comfortable and confident daily movement.

Technical Highlights:

- Product code : LHC-07COS
- Material : Elastic Cloth
- Color : Black & Skin



Cotton Stump Socks

Soft and breathable stump socks designed to protect the residual limb, improve hygiene, and enhance comfort during prosthetic use.

Technical Highlights:

- Product code : LHC-08COS
- Material : Cotton



Below Knee Titanium Kit (Premium)

Technical Highlights:

- Product code : LHC-03Bk
- Material : SS, Carbon Pylon
- Load weight : 80kg-150kg
- Includes:

- 1-Foot Adapter
- 2-Adapter To Clamp The Tube
- 3-Four Pronge Socket Adapter
- 4-Carbon Pylon With Adapter (200mm)



Below Knee Kit (Prime)

Technical Highlights:

- Product code : LHC-02Bk
- Material : SS+Al Pylon
- Load weight : 80kg-110kg
- Includes:

- 1-Foot Adapter
- 2- Adapter To Clamp The Tube
- 3-Four Pronge Socket Adapter
- 4-Pylon With Adapter (200mm)



Below Knee Kit (Plus)

Technical Highlights:

- Product code : LHC-02Bk
- Material : SS+Al Pylon
- Load weight : 80kg-110kg
- Includes:

- 1-Foot Adapter
- 2- Adapter To Clamp The Tube
- 3-Four Pronge Socket Adapter
- 4-Pylon With Adapter (200mm)



Above Knee Kit With Polycentric (Four Bar) Knee Joint Both Side Pyramid

Technical Highlights:

- Product code : LHC-07Ak
- Material : SS+Al Pylon
- Load weight : 80kg-110kg
- Includes:

- 1-LS-02KJ(JOINT)
- 2- Adapter To Clamp The Tube
- 3-Three Pronge Socket Adapter
- 4-Pylon With Adapter (400mm)
- 5-Foot Adapter



Above Knee Kit With Polycentric (Four Bar) Knee Joint

Technical Highlights:

- Product code : LHC-08Ak
- Material : SS+Al Pylon
- Load weight : 80kg-110kg
- Includes:

- 1-LS-02KJ(JOINT)
- 2-Three Pronge Socket Adapter
- 3-Pylon With Adapter (400mm)
- 4-Foot Adapter



Above Knee Kit With Single Axis Knee Joint Both Adjustable Constant Friction

Technical Highlights:

- Product code : LHC-09AK
- Material : SS+Al Pylon
- Load weight : 80kg-100kg
- Includes:

- 1-LS-03KJG(JOINT)
- 2-Adapter To Clamp The Tube
- 3-Three Pronge Socket Adapter
- 4-Pylon With Adapter (400mm)
- 5-Foot Adapter



Above Knee Kit With Single Axis Weight Activated Brake Knee Joint

Technical Highlights:

- Product code : LHC-010Ak
- Material : SS+Al Pylon
- Load weight : 80kg-110kg
- Includes:

- 1-LS-04KJ(JOINT)
- 2- Adapter To Clamp The Tube
- 3-Three Pronge Socket Adapter
- 4-Pylon With Adapter (400mm)
- 5-Foot Adapter



Above Knee Kit With Single Axis Knee Joint With Manual Lock

Technical Highlights:

- Product code : LHC-11Ak
- Material : SS+Al Pylon
- Load weight : 80kg-100kg
- Includes:

- 1-LS-02KJ(JOINT)
- 2- Adapter To Clamp The Tube
- 3-Three Pronge With Inner
- 4-Pylon With Adapter (400mm)
- 5-Foot Adapter



Below Knee Kit

Built with a stainless steel structure and a bright red pylon for visibility and appeal, it offers stability, comfort, and safe mobility for growing users.

Technical Highlights:

- Product Code : LHC-01C
- Material: SS+Aluminium
- Load Capacity: 05kg-50kg



Above Knee Kit

Made with a durable stainless steel structure, it provides secure support, smooth movement, and comfortable mobility to meet the needs of growing users.

Technical Highlights:

- Product Code : LHC-02C
- Material: SS+Aluminium
- Load Capacity : 05kg-50kg



Throw Knee Kit

A durable and stable prosthetic solution designed for through-knee amputations. This kit provides strong support, improved balance, and smooth mobility, ensuring comfort and confidence during daily activities.

Technical Highlights:

- Product Code : LHC-03C
- Material: SS+Aluminium
- Load Weight : 05kg-50kg



Drop Lock Orthotic Knee Joint With Bar

A robust and dependable orthotic knee joint designed to provide maximum stability and controlled movement for patients requiring knee support.

Technical Highlights:

- Product code : LHC-01M
- Material : Al /SS
- Product Size : 1,2&3(Pair)
- Load weight : 40kg-90kg



Spring Loaded Knee Joint

A precision-engineered orthotic knee joint designed to provide controlled knee movement with enhanced mechanical efficiency.

Technical Highlights:

- Product code : LHC-04M
- Material : Al /SS
- Product Size : Adult
- Load weight : 40kg-90kg



Off-Set Orthotic Knee Joint With Bar

A mechanically assisted prosthetic knee joint designed to provide controlled swing motion and improved walking stability.

Technical Highlights:

- Product code : LHC-05M
- Material : SS
- Product Size : 1,2&3(Pair)
- Load weight : 40kg-90kg



PU (Tamarack) Ankle Joint

A compact and durable orthotic ankle joint designed to provide controlled ankle movement and enhanced stability.

Technical Highlights:

- Product code : LHC-06M
- Material : PU
- Product Size : 1,2&3(Pair)
- Load weight : 40kg-90kg



Metallic Ankle Joint

A strong and reliable orthotic ankle joint designed to provide firm support, controlled motion, and long-term durability.

Technical Highlights:

- Product code : LHC-07M
- Material : SS
- Product Size : 1,2&3(Pair)



Colouring Paper Sheet

A specially designed paper sheet used for cosmetic finishing and shade matching of prosthetic and orthotic devices.

Technical Highlights:

- Product code : LHC-10M
- Material : Paper



RAW MATERIALS

Carbon Fiber Cloth

Carbon fiber consists of thin carbon filaments woven into fabric or combined with resin to form a rigid & strong socket.



Technical Highlights:

- Product code : LHC-08RM
- Material : Carbon

Carbon Sleeve (Stockinette)-4"/6"/8"

It is a stretchable carbon fiber tube that easily slides over the plaster model or socket. When impregnated with resin, it forms a strong.



Technical Highlights:

- Product code : LHC-09RM
- Material : Carbon

Pedline Sheet's

Pedline is applied over laminated sockets or cosmetic foam to achieve a uniform, durable, and aesthetically pleasing surface before final finishing.



Technical Highlights:

- Product code : LHC-12RM
- Product size : 2mm, 4mm, 6mm, 8mm (1000x2000)mm
- Material : Foam

Prozot Sheet's

Prozot is applied over laminated sockets or cosmetic foam to achieve a uniform, durable, and aesthetically pleasing surface before final finishing.



Technical Highlights:

- Product code : LHC-11 RM
- Product Size : 2mm, 3mm, 5mm, 6mm
8mm, 10mm, 12mm (1250x1900)mm
- Material : Foam

RAW MATERIALS

Ortho Rc Prime Polypropylene Sheet's

These sheets soften when heated and can be easily vacuum-formed or drape-formed over positive models.

Technical Highlights:

- Product code : LHC-01T
- Material : MS
- Material size : 2/3/4/5/6/8
- Material : Polypropylene



Ortho Rc Prime Polypropylene Sheet's

These sheets become soft on heating and can be vacuum-formed or drape-formed over positive casts.

Technical Highlights:

- Product code : LHC-12RM 10/12/15
- Product Size : 10mm, 12mm, 15mm
- Material size : 400mm x 400mm
1220mm x 2000mm
- Material : Polypropylene



PVA Sleeve's

PVA sleeves are placed over the positive model and reinforcement layers during lamination. After curing, the sleeve is dissolved.

Technical Highlights:

- Product code : LHC-16RM
- Product size : 20"x4"x2" to
40"x14"x2"
- Quantity : 10 pac
- Material : Plastic



Teflon Sheet

Teflon sheet are placed between heated plastic materials and moulds or vacuum equipment to prevent sticking, ensure smooth surface finish, and protect equipment.

Technical Highlights:

- Product code : LHC-20 RM
- Product Size : 1M x 1M
- Material : Teflon



RAW MATERIALS

Cotton Stockinette

It is a stretchable cotton sleeve that fits easily over the limb or plaster model, providing a smooth base layer and protecting skin during casting or fabrication procedures.



Technical Highlights:

- Product code : LHC-19RM
- Product Size : 30,60,80,100,120,150mm
- Quantity : 10 Meter Roll
- Material : Cotton

Copper Rivet

Copper rivets are installed by passing the rivet through aligned holes and deforming the tail to create a secure, vibration-resistant joint.



Technical Highlights:

- Product code : LHC-22RM
- Type : Any Length / Head / Thickness
- Material : Copper

Press Button

A manually operated control used to activate or operate a function when pressed.



Technical Highlights:

- Product code : LHC-23RM
- Type : 9mm / 12mm (1000Nos)
- Material : MS

Pigment Paste for Lamination Resin – 250 g

High-quality pigment paste for lamination resins, ensuring uniform color, strong bonding, and a durable finish.



Technical Highlights:

- Product code : LHC-01 RM
- Material : Resin-compatible pigment concentrate

Casting Mandrill BK/AK

Precision-engineered nylon mandrill designed for Below-Knee (BK) and Above-Knee (AK) prosthetic socket fabrication.

Technical Highlights:

- Product code : LHC-03T
- Material : Nylon



Bending Brace Apparatus

A robust and user-friendly bending brace apparatus designed for accurate shaping and adjustment of orthotic metal components.

Technical Highlights:

- Product code : LHC-07T
- Material : MS



Bending Bar Apparatus

A sturdy and efficient bending bar apparatus used for precise bending and shaping of metal bars and flat strips in orthotic and prosthetic fabrication.

Technical Highlights:

- Product code : LHC-08T
- Material : MS



Rubber Bowl (Set)

A durable rubber bowl set designed for use in prosthetic and orthotic workshops. Commonly used for mixing.

Technical Highlights:

- Product code : LHC-H9T
- Material : Rubber



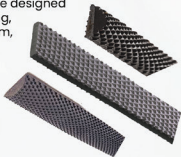
Surform Blade

Round / Half Round / Flat

A replaceable surform blade designed for rapid shaping, smoothing, and finishing of plaster, foam, and socket materials.

Technical Highlights:

- Product code : LHC-01T
- Material : MS



Draw Knife

A precision hand tool used in prosthetic and orthotic workshops for shaping, trimming, and finishing wood, plaster, and socket materials.

Technical Highlights:

- Product code : LHC-02T
- Material : MS



Anvil

A heavy-duty anvil designed for shaping, forming, and finishing metal components used in prosthetic and orthotic fabrication.

Technical Highlights:

- Product code : LHC-04T
- Material : MS (25kg)



Bench Vice -4"/6"

A Bench Vice (4 inch / 6 inch) is a heavy-duty workshop holding tool used to firmly clamp components during fabrication, repair.

Technical Highlights:

- Product code : LHC-05T
- Material : MS



Allen Key Set

Allen keys are L-shaped tools made from hardened steel, designed to fit hex socket bolts accurately without slipping.

Technical Highlights:

- Product code : LHC-01T
- Material : MS



01 - Router Machine

1. Premium **Pillar Router Machine** (LHC3RMC)
Compact Look With **Multi Functions**.

Specification

- **X axis, Y axis, Z axis** With Rotation **360 & 180**
X axis:- Horizontal (**Left and Right**) Fix
Y axis:- Vertical (**Up and Down**) Height 410mm Adjustable By Using Handle on Guide Screw
Z axis:- Pull-Push System Adjustment As per socket By Using mechanical System
Rotation:- 360 Degree Rotation with Z axis and 180 Degree with Y axis
- Low Noise Due to Heavy Duty Casted Base.
- VFD Control Multispeed (**0 to 2880**) rpm System
- Power Motor with Half HP and 1 HP Model.
- Padel Operating (On/Off) system.

Available Models

01 - Multispeed System (**0 to 2880**) rpm

02 - Direct Drive **2880 rpm**

Warranty

1 Year on Motor

Servicing & Maintenance

Easy Oiling Servicing At Customer End.



Installation

Easy Installation At Customer
End By Using Manual

01 - Router Machine

2. Dynamic Bench Router Machine (LHC5RMC)
Table Mounted With Hight and Angle Adjustable.

Specification

- X axis, Y axis, Z axis
 - X axis:- Horizontal (Left and Right) Fix
 - Y axis:- Vertical (Up and Down) 100mm Adjustable By Using Mechanical System.
 - Z axis:- Pull-Push System Adjustment As per Base Flange By Using Mechanical System.
- Rotation:- (+) or (-) 10 to 20 Degree Adjustable.
- Low Noise
- VFD Control Multispeed (0 to 2880)rpm System.
- Power Motor with Half HP and 1 HP Model.
- Regular Operating (On/Off) system.

Available Models

01 - Multispeed System (0 to 2880) rpm

02 - Direct Drive 2880 rpm

Warranty

1 Year on Motor

Servicing & Maintenance

Easy Oiling Servicing At Customer End.



Installation

Easy Installation At Customer
End By Using Manual

02 - OVEN MACHINE'S

1. Dynamic **Electric Oven** (LHC5EMC)

Suitable For **Prosthetic and Orthotic and Silicon Work**

Specification

- Inside Oven Size **W×D×H mm 950×610×770**
- Inside chamber made two level of stainless steel one is a flat and other perforated sheet.
- Outside Body made of Mild Steel Painted with Powder Coating.
- Heating Sorce :- **Using High Quality U Bend Heating Quil.**
- Thik Molecule Heavy Duty Rock Wool use for Heat Resistance.
- Heating is uniform all around through high speed circulating fans with using a Super Quality 0.5hp motor
- Inside arrangement for orthotic trays and prosthetic draping Frame and bulb for clear vision.
- Toughened glass window on both the doors With silicon Gascut.
- Temperature range is up to 300 degree c.
- Power supply : **220-250 Volts A.C. 50Hz**, Single Phase or **400-450 Volts A.C. 50Hz** Three Phase.
- **Including :- One Tray with Teflon Sheet**

Available Models :- Different Body

01 - Inner body SS outer MS (As per above)

02 - Inner and Outer body SS

Warranty
1 Year on Motor
and Heating Quil

Servicing
Easy Cleaning Servicing at Customer End.



Installation
Easy Installation At Customer
End By Using Manual

02 - OVEN MACHINE'S

2. Super Infra-Red (IR) Oven (LHC5IMC)

Suitable For **Prosthetic and Orthotic and Silicon Work**

Specification

- Inside Oven Size W×D×H mm 950×610×770
- A inside chamber made of stainless steel.
- A outside Body made of mild steel painted with Power Coating.
- **Heating Source -Using High Quality Infra-red Quartz tube With 5000 hr. Warranty.**
- Thick molecule heavy duty rock wool use for heat resistance.
- Heating is to be in control use super Performance quality blower.
- Inside arrangement for orthotic trays and prosthetic draping Frame.
- Toughened glass window on both the doors.
- Temperature range is up to 300 degree c.
- Power supply : 220-250 Volts A.C. 50Hz, Single Phase or 400-450 Volts A.C. 50Hz Three Phase.
- A digital timer and temperature with an alarm system is provided.
- **Including :- One Tray with Teflon Sheet**

Available Models :- Different Body

01 - Inner body SS outer MS (As per above)

02 - Inner and Outer body SS

Available Working Models :- Premium Working Experience.

01 - Normal button system with analog (As per above)

Normal button system with analog (As per above)



Installation
Easy Installation At Customer
End By Using Manual

Warranty
1 Year on blower

Servicing
Easy cleaning servicing
at Customer End.

02 - OVEN MACHINES

3. Premium Infra-red (IR) Oven (LHC3IMC)

Suitable For **Prosthetic and Orthotic and Silicon Work**

Specification

- Inside Oven Size W×D×H mm 1200×1000×500
- A inside chamber made of stainless steel.
- A outside Body made of mild steel painted with powder coating.
- **Heating Source :- Using Premium Quality Infra-red Quartz Tube With 5000 hr. Warranty.**
- Thick molecule heavy duty rock wool use for heat resistance.
- Heating is to be in control use super performance quality blower.
- Inside arrangement for orthotic trays and prosthetic draping Frame using 180 degree rotation trolley.
- Toughened glass window on the doors.
- Temperature range is up to 300 degree c.
- Inbuilt adjustable water leveling system in castor
- Power supply : **220-250 Volts A.C. 50Hz**, Single Phase or **400-450 Volts A.C. 50Hz** Three Phase.
- Prime screen touch delta PLC program with extra features.
- Including :- **Teflon Sheet**

Available Models :- Different Body

01 - Inner body SS outer MS (As per above)

02 - Inner and Outer body SS

Warranty
1 Year on
blower

Servicing
Easy Cleaning Servicing at Customer End.



Installation

Easy Installation At Customer
End By Using Manual

03 – DUST COLLECTOR

1. Premium Dust Collector (LHC3WMC)
Suitable For Prosthetic and Orthotic.

Specification

- Outside Size W×D×H mm
- Number Of Bags – 1 no
- Airflow – 1200cmh / 700cfm
- S. Pressure – 150mm WC
- No of Inlets – 1 no
- Inlet Size – 100 mm
- Flexible Hose – 3 Meters is included.
- Metal Dust Bucket with Castor.
- Castor Base Moveble Trolley.
- Fully powder coated with Mat Finish.
- Starter for Turn ON/OFF of Dust Collector is Included
- Power cable from machine to starter is provided 1hp Centrifugal Blower Moter with Dynamically Balanced Impeller
- Power – 1hp

Available Models :- Different Dust Buckets.

01 - Metal dust bucket with castor (As per above).

02 - Cloth Dust Bag.

Warranty
**1 Year on Motor
and Impeller**

Servicing
Easy Cleaning Servicing at Customer End.



Installation

Easy Installation At Customer
End By Using Manual

04 - SUCTION TABLE

1. Dynamic Suction Table (LHC5SMC) Suitable For Prosthetic and Orthotic.

Specification

- Outside table Size H×W×L mm 770×800×1000
- Strong wooden Platform Base upper and down side
- Direct Drive High Vacuum Pump with Glass Jar for Suction Filter
- Vacuum Capacity - 250lpm
- AK + BK Heat resistance prime quality tuffen bubble draping set.
- AK + BK Aluminium hexagon with inner circle sandwich frame for draping set.
- AK + BK Conical Nylon Mandrill.
- Taparia fixed base 6 inch bench vice.
- Drapping post for AFO.
- Lamination post
- 2 Inch Fixed pipe vice
- Heavy duty adjustable leveling base
- Fully powder coated with matte finish metal frame.
- Starter for Turn ON/OFF of vacuum machine.
- All chilled part made in stainless steel material.
- Power - Single Phase

Available Models :- Different Platforms

- 01 - Wooden platform (As per above). 02 - Miled steel platform. 03 - Stainless steel platform.

Warranty
1 Year on
Motor

Servicing
Easy Oiling and Cleaning Servicing at Customer End.



Installation
Easy Installation At Customer
End By Using Manual

04 – SUCTION TABLE

2. Premium Suction Table (LHC3SMC)

Router with Dust Collector Suitable For Prosthetic and Orthotic

Specification

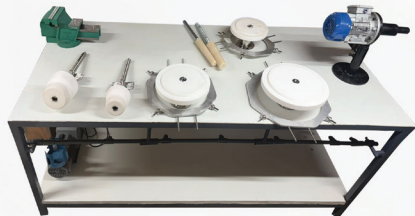
- Outside table Size H×W×L mm 770×800×1700.
- Dynamic Bench Router Machine (LHC5RMC).
- Dynamic Dust Collector.
- Strong wooden platform Base upper and down side.
- Direct drive high vacuum pump with glass jar for suction filter.
- Vacuum Capacity - 250lpm.
- AK + BK Heat resistance prime quality tuffen bubble draping set.
- AK + BK Aluminium hexagon with inner circle sandwich frame for draping set.
- AK + BK Conical Nylon Mandrill.
- Taparia fixed base 6 inch bench vice.
- Drapping post for AFO.
- Lamination post.
- 2 inch Fixed pipe vice.
- Heavy duty adjustable leveling base.
- Fully powder coated with matte finish metal frame.
- Starter for Turn ON/OFF of vacuum machine.
- All chilled part made in stainless steel material.
- Power - Single Phase

Available Models :- Different Platforms

- 01 - Wooden platform (As per above). 02 - Miled steel platform. 03 - Stainless steel platform.

Warranty
1 Year on
Motor

Servicing
Easy Oiling and Cleaning Servicing at Customer End.



Installation
Easy Installation At Customer
End By Using Manual

05 – WORKING TABLE

1. Dynamic **Working Table** (LHC5WMC)
Suitable For **Prosthetic and Orthotic**.

Specification

- Outside table Size H×W×L mm 800×800×1000 (+ 700mm Hight for peg bord)
- Strong wooden platform Base with rubber sheet for impact work
- Four drawer system.
- Electric 2 nos of plug socket box.
- Heavy duty adjustable leveling base.
- Fully powder coated with matte finish metal frame
- Power – Single Phase

Available Models :- Different Platforms

01 - Wooden platform (As per above).

02 - Miled steel platform.

Warranty
**1 Year on
Plug socket**

Servicing
Easy Cleaning Servicing at Customer End.



Installation
Easy Installation At Customer
End By Using Manual

05 – WORKING TABLE

2. Premium Working Table (LHC3WMC) Suitable For Prosthetic and Orthotic.

Specification

- Outside table Size H×W×L mm 800×800×1500 (+ 700mm High for peg bord)
- Strong wooden platform Base with rubber sheet for impact work
- Full covered body.
- Total 8 nos drawer (4 +4) and 2 nos big cabinet with center partition system.
- Rack's for material storage 5 nos.
- Wooden try 2 nos.
- Hanging hook 12 nos.
- White board with duster and marker.
- Tube light with arrangement.
- 6 inch bench vice fitted on table
- Electric 3 nos of plug socket box.
- Heavy duty adjustable leveling base/ moving castor.
- Wooden try 2 nos.
- Power - Single Phase

Available Models :- Different Boyd with Platforms

01 - Wooden platform with metal body (As per above).

02 - Metal body with metal platform.

Warranty
1 Year on
Plug socket

Servicing
Easy Cleaning Servicing at Customer End.



Installation
Easy Installation At Customer
End By Using Manual

WHY CHOOSE US

At Lives Health Care, we understand that prosthetic and orthopedic products are not just medical devices – they are a part of someone's daily life. That understanding drives everything we do.

- Human-Centric Manufacturing – Designed with real patient needs in mind
- High Quality, Affordable Pricing – Because mobility should be accessible to all
- Precision & Durability – Built for long-term daily use
- Wide Product Range – From components to complete prosthetic kits
- Consistent Quality Control – Export-grade standards across all products
- Trusted by Professionals – Preferred by clinicians, technicians, and distributors
- Made in India, Trusted Globally – Manufactured with care and responsibility
- Every product from Lives Health Care is crafted to deliver confidence, comfort, and reliability.

WHERE WE SERVE

NATIONAL PRESENCE (INDIA)

- Maharashtra
- Gujarat
- Rajasthan
- Madhya Pradesh
- Uttar Pradesh
- Karnataka
- Tamil Nadu
- Telangana
- West Bengal
- Delhi NCR

INTERNATIONAL PRESENCE

- Middle East – UAE, Saudi Arabia, Oman, Qatar
- Africa – Kenya, Nigeria, Ethiopia, Tanzania, South Africa
- South Asia – Bangladesh, Sri Lanka, Nepal
- South East Asia – Indonesia, Philippines, Vietnam
- Latin America – Selected regions with rehabilitation demand



A black silhouette of a male runner in a full-body athletic suit, captured in a dynamic running pose. The runner is positioned on the left side of the image, moving towards the right. The background is a dark blue gradient with a network of light blue dots and lines, suggesting a digital or health-related theme.

Take a New Step with Lives

📞 9763630151 / 9536091555 / 9763630169

✉ liveshealthcare@gmail.com

📍 Gat No. 107/108 Near Pandurangkupa Hotel,
Jyotibanagar Talawade, Pune-411062



SCAN QR CODE FOR DETAILS.